

QUÍMICA ORGÂNICA

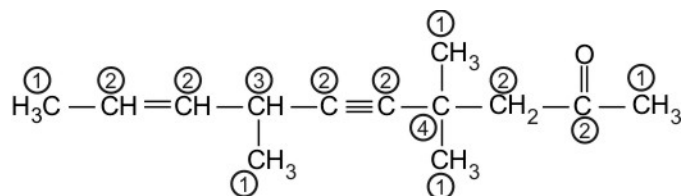
Prof. Sandro Lyra

GABARITO LISTA EXTRA 01

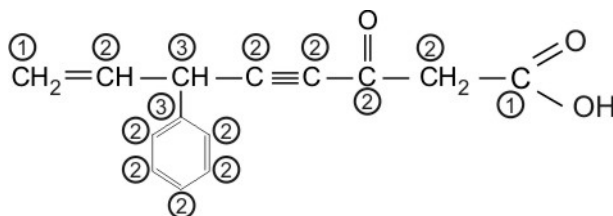
1.

a) F.M. = $C_{13}H_{20}O$

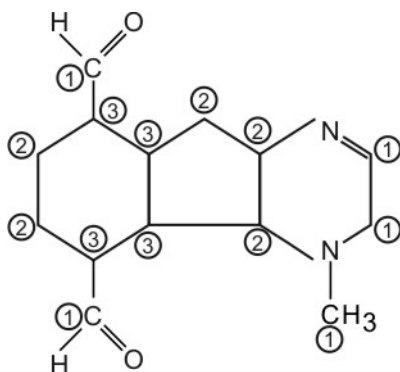
Ligações sigma = 33

Ligações π = 4b) F.M. = $C_{14}H_{12}O_3$

Ligações sigma = 29

Ligações π = 8

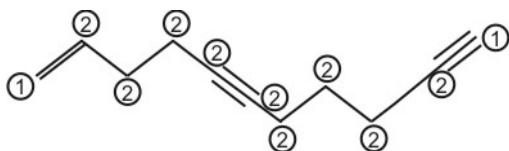
c)

F.M. = $C_{14}H_{20}O_3N_2$

Ligações sigma = 42

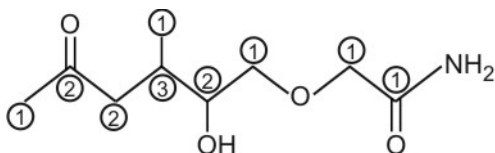
Ligações π = 3

d)

F.M. = $C_{11}H_{14}$ Ligações π = 5

Ligações sigma = 24

e)

F.M. = $C_9H_{17}O_4N$ Ligações π = 2

Ligações sigma = 30

